

15 East Gay Street
 First Floor
 1,340 Square Feet

115 WESTTOWN ROAD
 SUITE 201
 WEST CHESTER, PA 19382
 610.429.4470



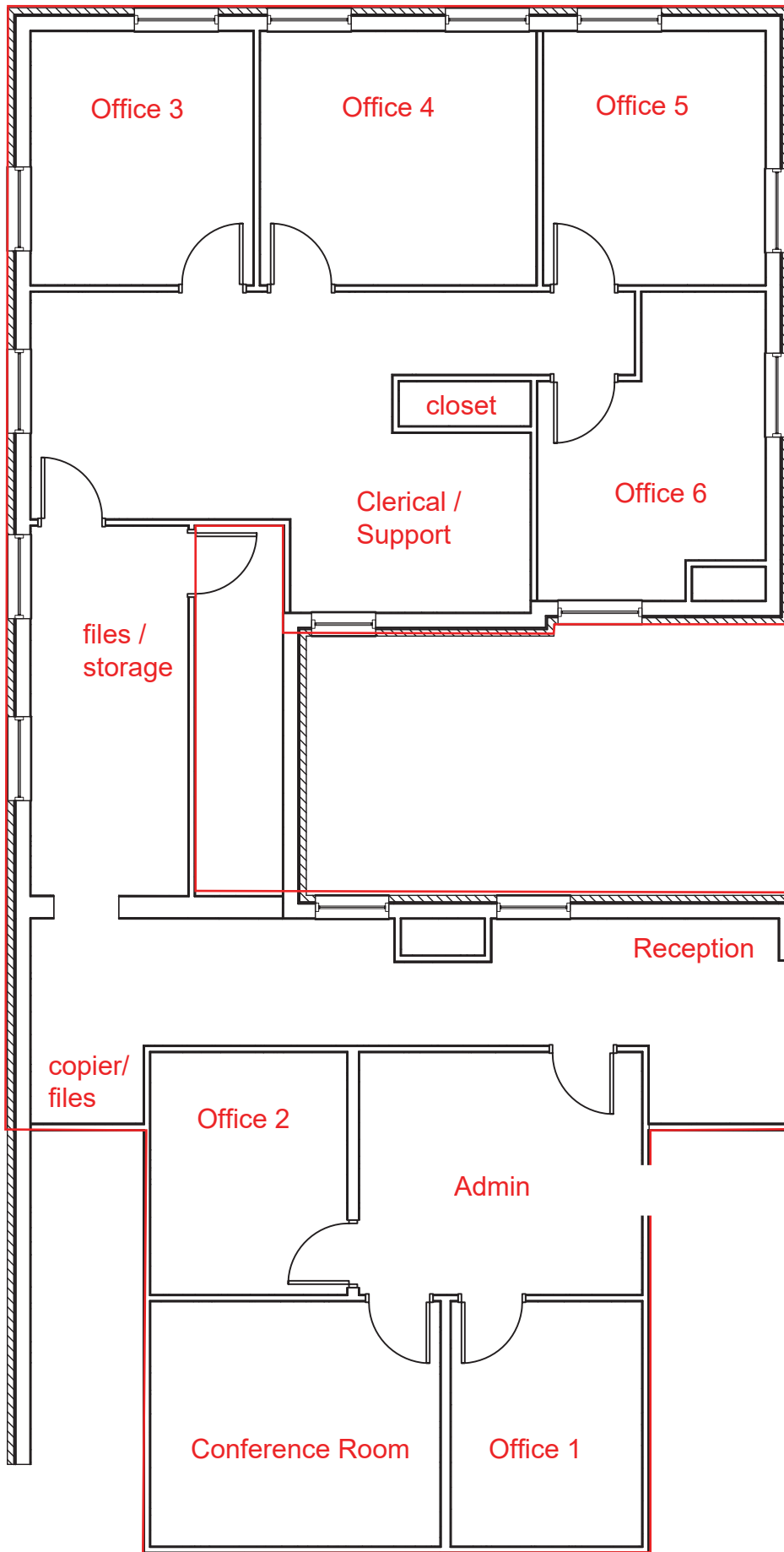
15-17 E GAY STREET

WEST CHESTER, PA 19380

SHEET TITLE

07/26/17 DATE
 AS SHOWN SCALE
 AS DRAWN BY
 JWL CHECKED BY
 17041 PROJECT #

SHEET NUMBER



15 East Gay Street
 Second Floor
 2,767 Square Feet

Suite Entry
 2nd floor
 atrium

copier/
 files

Reception

Office 3

Office 4

Office 5

closet

Clerical /
 Support

Office 6

files /
 storage

copier/
 files

Office 2

Admin

Conference Room

Office 1

115 WESTTOWN ROAD
 SUITE 201
 WEST CHESTER, PA 19382
 610.429.4470



15-17 E GAY STREET

WEST CHESTER, PA 19380

SHEET TITLE

07/26/17 DATE
 AS SHOWN SCALE
 AS DRAWN BY
 JWJ CHECKED BY
 17041 PROJECT #

SHEET NUMBER